

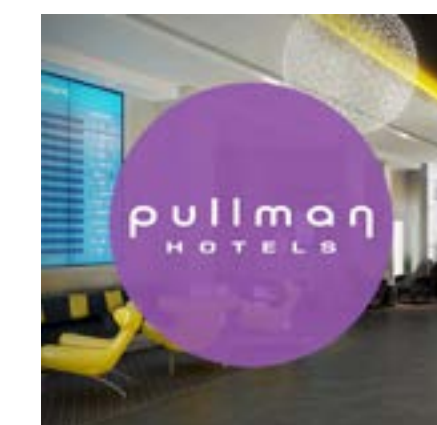
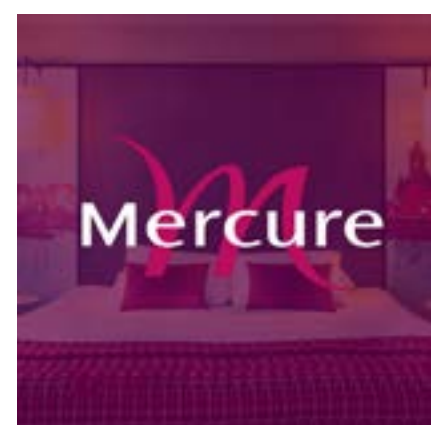
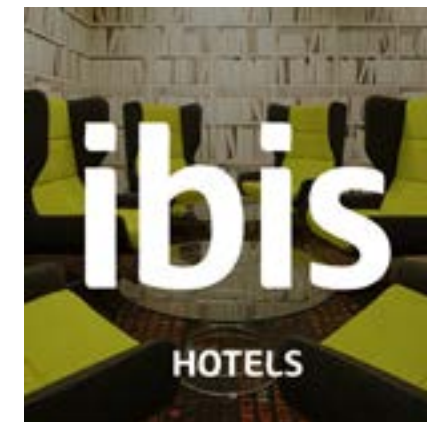
KONCEPT

I N T E R I O R D E S I G N



OVERVIEW PORTFOLIO
MAY 2024

SOME OF OUR CLIENTS



Meet The Team



Paul Scott
Design Director



Simon Scott
Technical Director



Hannah Boulton
Senior Interior Designer



Sarah Graham
Senior Interior Designer



Jianne Amante
Interior Designer



Ioan Morar
Interior Designer

HOW WE WORK

We are... trend aware, innovative & adaptive, led by design and always budget conscious!

Koncept pride ourselves in our pragmatic and pro-active approach to the design and construction process. With no particular 'house style' we diversify design to every clients needs and budget to produce bespoke interiors.

We offer a comprehensive interior design service, taking initial ideas from paper through planning, to the last day on site and beyond. Our comprehensive service eliminates misinterpretation of design to ensure the result is exactly on target.

- **Established working relationships with international operators**

We regularly work with the likes of Accor, Hilton, IHG, Malmaison, Radisson to name but a few along with independent boutique hoteliers.

- **Specialists in hospitality & PRS/ BTR sector**

Great understanding of the guest and operational requirements and relationships with major providers such as Get Living & Vita Living.

- **Understanding of UK market**

- **Listed building experience**

KONCEPT has been established for 34 years (in our previous guise as LRW Interior Design) and has experienced continuous growth over this period. When required by the client we have access to resources such as three dimensional imaging or project control systems without recourse to independent consultants.





The Municipal Hotel, Liverpool

M Gallery

Unique Environments

179 Bedrooms Incl. 4 Suites

Swimming Pool & Spa

Restaurant & Bar

Meeting & Events Center

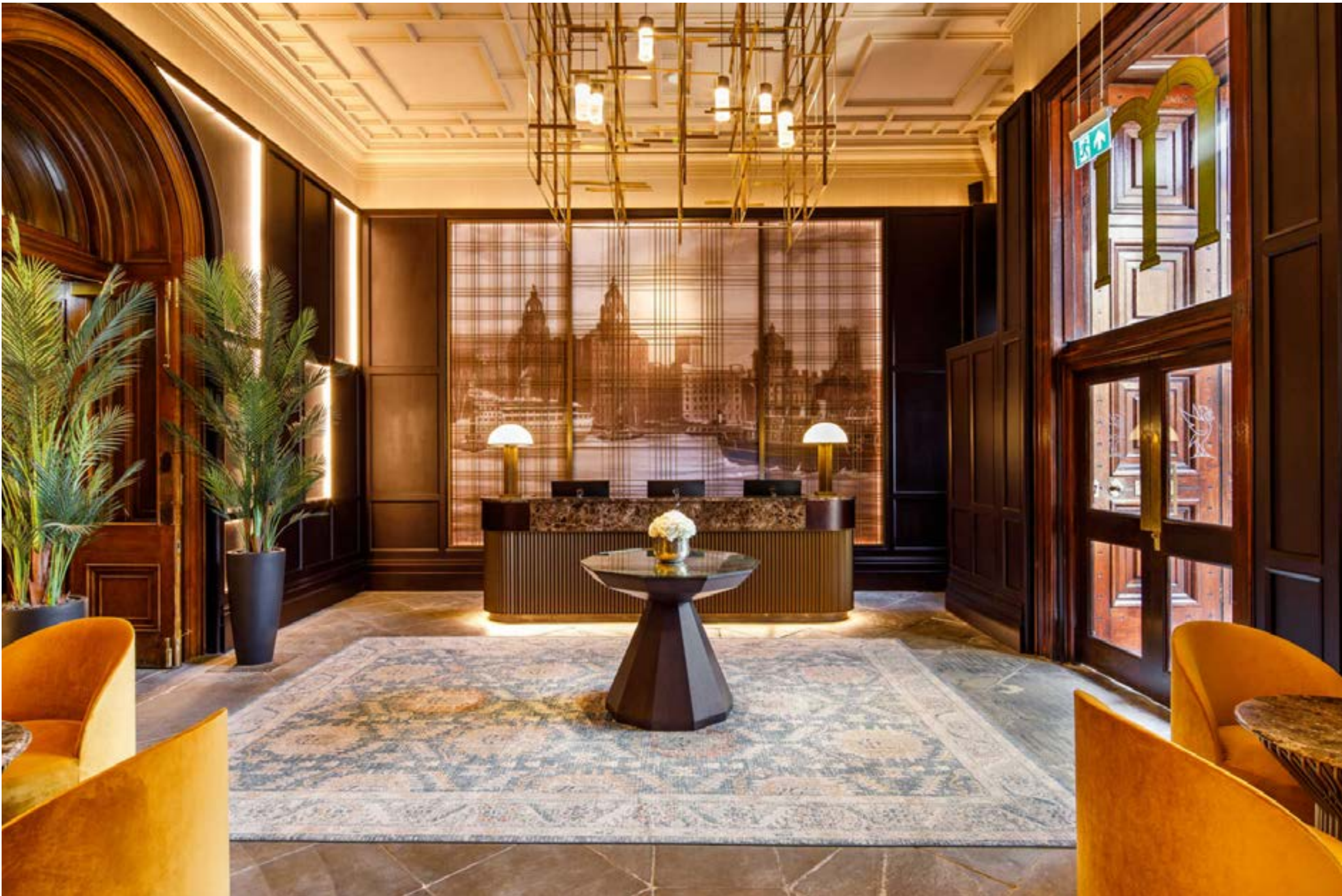
We took this project over from its original grade II listed council offices status, and converted it to a beautiful and luxurious M Gallery hotel.

Throughout the project we undertook the design of all areas of the hotel, with a range of room options and amenities.

[Top Left:] Initial CGI exploration of form and lighting design of the central palm court bar.

[Bottom Left:] Completed photograph showing on of the supporting lounge areas adjacent to the central court.

[Below:] Completed photograph showing the reception desk.





Public Areas

With the exception of the newly formed pool & spa block to the rear, all other areas in the hotel were subject to strict listed building guidance. So the challenge and joy of this project came from the process of designing a scheme around the beautiful intricacies.

[Top Left:] Palm Court Bar. Completed photograph showing the centrally placed bar. From day one, we had always pictured the bar as a central focal point, visible in the immediate sight line from the main reception entrance.

[Bottom Left:] Botanic Tearoom. Completed photograph showing the range of fixed furniture and the complementing tones. The bar joinery here was design to look as though it had been a long standing design feature of the building.

[Below:] Meeting Suite. Completed photograph showing the balance of new and old in the meeting suite. In this area we had a large extent of panelling and listed features, so the scope with limited.



Suite Design

Showcasing one of the most unique rooms in the building. The volume of space is most suited to an events space, but instead is one of the primary suites in the venue.

The building listing around the wall panelling and ceiling features restricted any partition works, so we thought this the ideal opportunity to explore a central shower & toilet room. The placement of the room naturally creates a dynamic through the space from bedroom and bath to lounge and changing area.





Guestroom Design

With the exception of the newly formed pool & spa block to the rear, all other areas in the hotel were subject to strict listed building guidance. SO the challenge and joy of this project came from the process of designing a scheme around the beautiful intricacies.

[Top Left:] Twin room design. Completed photograph showing the twin room dynamic. We felt the feature headboard back panel would loose its meaning as two separate units, so the beds were positioned proportionately to maintain the elegant spacings.

[Bottom Left:] En- Suite. Computer visualisation showing the balance between materials, joinery and lighting.

[Below Center:] TV Unit. Completed photograph. Given the listed wall structures, we were unable to mount TV's to existing walls, so wanted to create a unit to tie in with the headboard design. In a hotel of this stature we would always look to include TV's into joinery for a more considered aesthetic.

[Bottom Right:] Wardrobe / Drinks Unit. Completed photograph. In the early planning phase we decided to design a fixed suite of wardrobe & drinks unit sizes. The ideal would be built in wardrobes, but it would have been close to 179 uniquely sized units. This unit allowed a much more efficient solution, allowing more time for the refinement of unit.





Pool & Spa Design

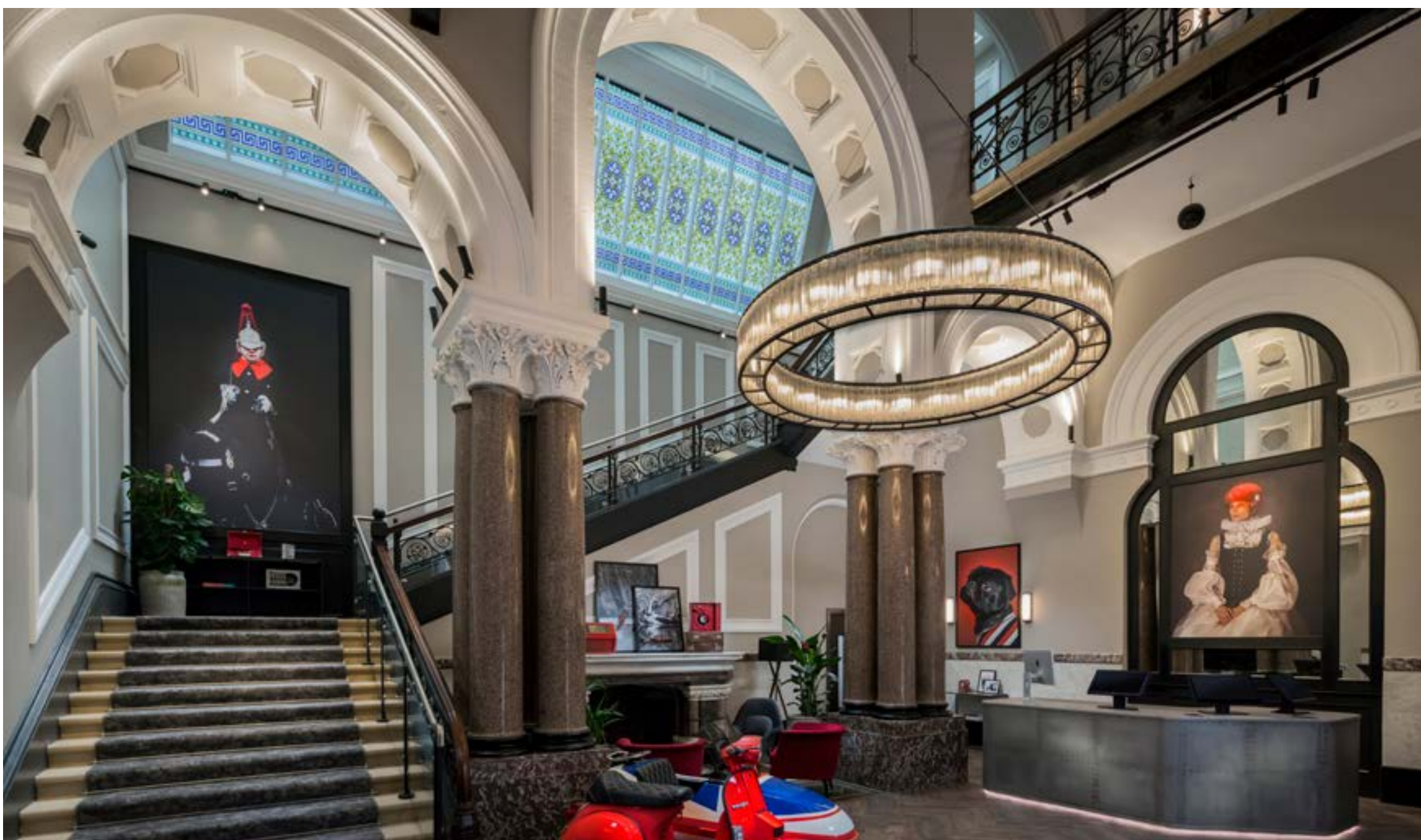
[Top Left:] Pool. Computer visualisation. The swimming pool was one of the main areas focused on in the value engineering process. The initial scheme shown had a beautiful fret-cut metal profile along the span of the space, gently illuminated from the rear to add the sense of elegance and warmth within the space.

[Bottom Left:] Completed photograph showing the sauna detail.

[Bottom Center:] General seating area

[Bottom Right:] Spa reception / shop.





Radisson Red, Liverpool

Radisson Hotel Group

Creative Implementation

202 Bedrooms Incl. 4 Suites

Gym

Restaurant & Bar

Meeting & Events Center

Koncept were approached alongside LRW architects to develop and implement the current brand guidelines for the recently launched Radisson Red brand.

The setting couldn't be better, the intricacies of Alfred Waterhouse's architecture to complement the contemporary dynamism of the Red brand.

We worked closely with the Radisson development team to achieve something the whole design and client team can be proud of.





Bar & Restaurant Design

Completed photographs showing our original works for the Stoke bar & restaurant within Radisson Red, Liverpool.

The basic design principles were influenced by a brand identity document from Radisson, however these guidelines are flexible, and we were able to mould the guidelines around the buildings features and impressive views over the city.



Meeting Centre & Gym

Mainly situated below the building in the basement, we utilised the available space to plan out a number of conference and meeting rooms.

One of our primary objectives with the development here was to enable flexibility of purpose for each space. Some rooms are serviceable from the kitchen to enable private dining rooms.



Guestroom Design

Working with the ongoing brand standards, we developed the design to suit the building and made sure this hotel felt unique to the group.

Koncept designed all the guest room joinery from scratch, and chose the soft seating to complement these forms.





Suite Design

The images show two of the four suites within the hotel. The theming is consistent, however the spatial opportunities differ from suite to suite, so each one was developed in detail.

The suite bathrooms have been received well. The privacy curtain allows the room to change its dynamic totally with the vibrant tones. The crittall pod allows the guest the ability to remain part of the room during preparation and relaxation.



Novotel Canary Wharf, London

Accor

Unique Environments

313 Brand standard rooms, 26 suites

Swimming Pool & Spa

Restaurant & Bar - External concept implemented

Coffee Shop

Meeting & Events Center

The stunning 39- storey hotel overlooking the world famous financial district is one of a number of projects we have completed for Novotel.

Novotel London Canary Wharf is a Hotel inspired by the industrial Maritime age and Canary Wharf import & export heritage.

From the use of authentic materials, patterns and textures coupled with the bespoke contemporary furniture, a truly unique interior has been created which is true to its roots, delighting the senses and bringing the industrial past in to the present.





Lower Level Public Areas

The entrance into the concept space. As mentioned above, the fundamental concept is around the import & export trade and maritime age. Rich patinas and in depth layering of forms creates a truly escapist space.

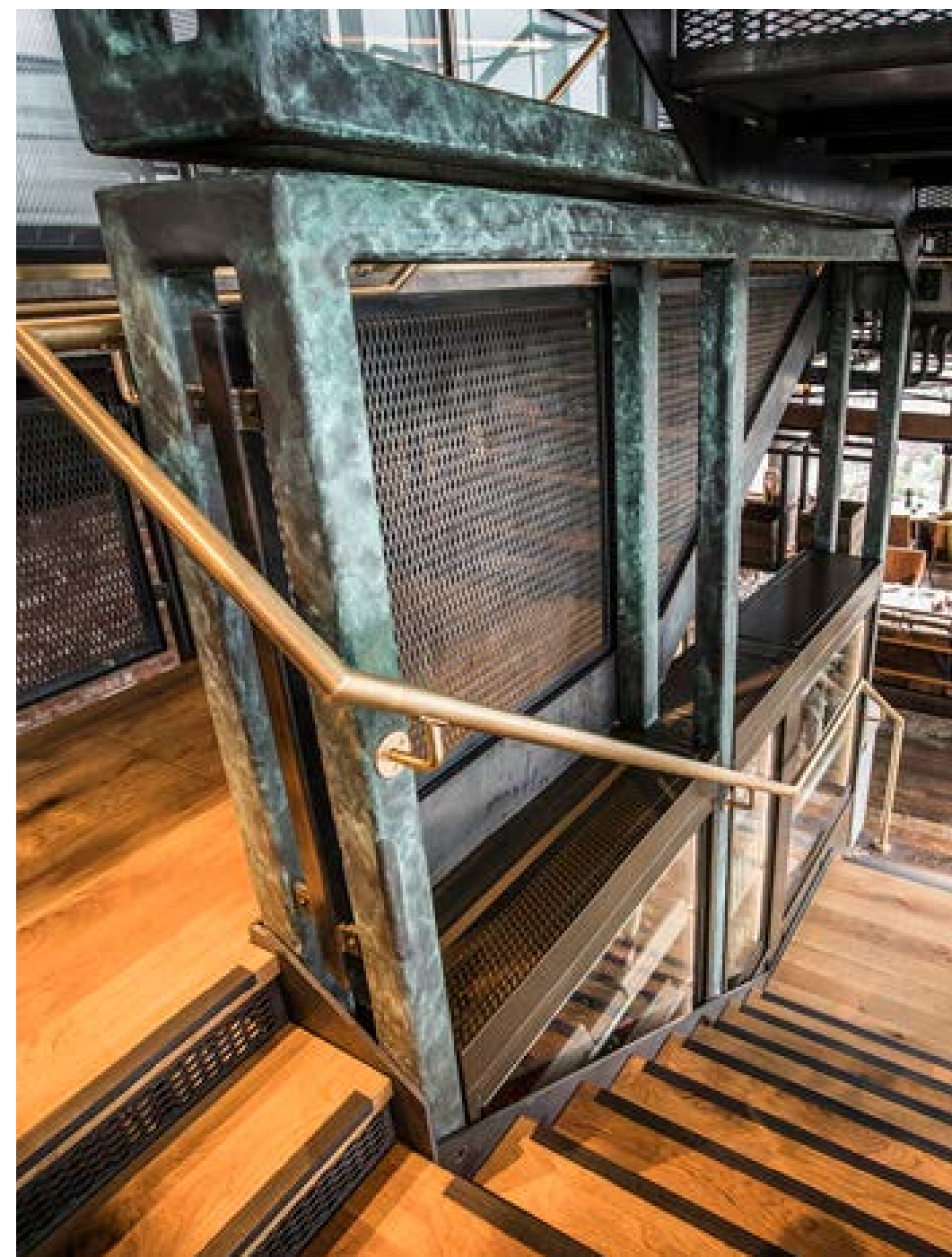
Koncept ID created the identity and design for Reception and lobbies, also the meeting suites. We then implemented a concept from Accor for the ground floor coffee shop.



Bokan Restaurant (Implementation)

An initial concept by Mystery design, we took the initial 3D exploration document and prepared the design for the built environment.

One of our favorite spaces in the whole building is the 39th floor WC's, we provided the concept work for the goods barrels overlooking Canary wharf, for a truly breathtaking experience.



Malmaison Deansgate, Manchester

Malmaison / Frasers Hospitality

Unique Environments

70 Bedrooms Incl. 2 Suites

Chez Mal Restaurant & Bar

Rooftop Sora Restaurant

Meetings Centre

Its guest rooms pay homage to the retro design of the 60s and 70s, referencing the iconic G Plan furniture of this era, a benchmark for classic British design. Each room talks to the exterior of the building design, complimenting the harsh, brutalist designs of the exterior with bold patterns, powerful colours, strong materiality and striking artwork.

Albert Square explores many different themes that we wanted to translate into design, from Art and Agriculture to Travel and The Natural World - these themes have been brought together with iconic Malmaison flair to create a hotel that is as bold, diverse and brilliant as the city itself.

The rooftop introduces Manchester and our guests to the seductive world of Sora; our incredible Pan-Asian Tapas & Cocktail Bar. This is a dining concept to elevate the senses. Mix and match small plates from an irresistible selection of sushi, Robatayaki and Pan-Asian style tapas dishes, and sip signature cocktails while taking in the panorama, overlooking Albert Square and Manchester Town Hall.



Novotel Paddington Village, Liverpool

Accor / Liverpool City Council

Creative Implementation

221 Bedrooms

Multi Level Public Areas

Conferencing Centre

Gym

Working with an overarching creative direction by The Sundukovy Sisters, Koncept ID were approached to implement the concept scheme and run the works through to completion on site.

Our works on site involved the brief as a starting direction and developing the environment to make the most of the space. The result is a set of public areas that change dynamic in each area.

We particularly like the natural tones in the lower public areas.



Guestroom Design

The three images portray the bedroom concept clearly. Our main works here were to establish a sense of continuation of concept no matter the room type you stay in.

One of the stand out features in this hotel is the forward thinking nature of the full access hoist in the accessible room.



The Majestic Hotel, Harrogate

Double Tree by Hilton

Unique Environments

184 Bedrooms

Champagne Bar & Grill

Swimming Pool & Spa

Meetings & Events Centre

The famous North East Spa town of Harrogate is the location of the recently refurbished 1900 Majestic Hotel that we are incredibly proud to have been associated with, The Majestic Hotel and Spa. Harrogate's rich history of being a spa town was the biggest driving force behind the creation of the scheme for the hotel. We wanted The Majestic to be a reflection of that period of history and we believe we achieved that perfectly.

The Majestic began its life as a hotel in the 1900's when locomotive steam transport to England's booming spa towns became readily available. The Majestic was the premier accommodation of the upper class and some of the country's most privileged people. Now, in this day and age we wanted to provide everyone who visits with this huge sense of grandeur, exclusivity and opulence. We feel we achieved this by creating a modern, contemporary scheme with echoes of tradition.

The space provides an impact that is reflected in the quality of materials that we selected. Luxurious velvets, natural marble and rich colour tones provide a sense of class and style. Clever lighting and a modern stylized design provide guests with the feeling that the building has been treated sensitively.



Seaham Hall, Durham

Pride of Britain

Unique Environments

Seaham Hall has been a beautiful boutique hotel to work on. The buildings architecture, grounds and views are all standout features. To top this off the client brief was forward thinking and enabled us to collaborate on a standout interior design scheme.

In the most recently refurbished suite 5, we wanted to really enhance the sea view and maximise the natural coastal light through the beautiful Georgian windows. The suite's fresh and bright interior takes its inspiration from artists that have long been drawn to the drama and energy of the sea and the tactility of the coastline. Flying seagull wallpaper, cracked paint effects and weathered timber is lifted with smatterings of vibrant colour. Cushions feature reproduction paintings by renowned artist Jessica Zoob, a oversized mirror is displayed on a paint-splattered easel and the headboard resembles a painter's palette, daubed with multicoloured paint.

The next phase of room refurbishments made a slightly bolder statement. The first Garden Room is light, and vibrant with colourful butterflies, birds and plant life providing the back drop to a luxurious lounge, elevated bedroom and private terrace complete with hot tub. Meanwhile, the first Suite reflects the flamboyant and romantic personality of Lord Byron featuring lots of colourful artworks, poetry and more references to nature and the sea.



The Dorchester Hotel, London

Brand Guideline Rollout

We are working with Beck Interiors to assist with the implementation of the guestroom rollout for the full ongoing rooms refurbishment.

Our remit is purely technical here, but gives us an incredible window into luxury hotel design and rollout.



Beckett Locke, Dublin

Saco / Locke Living

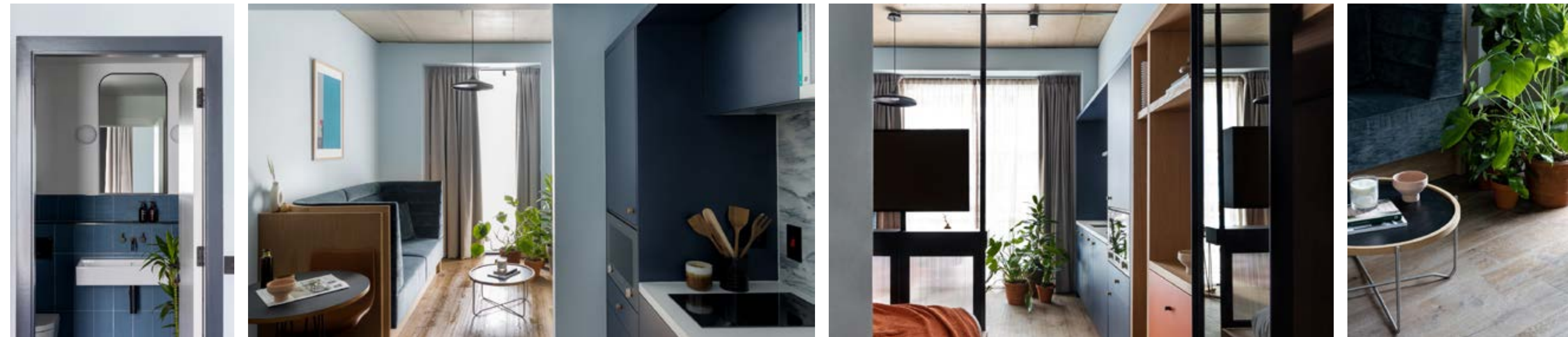
Brand Guideline Rollout

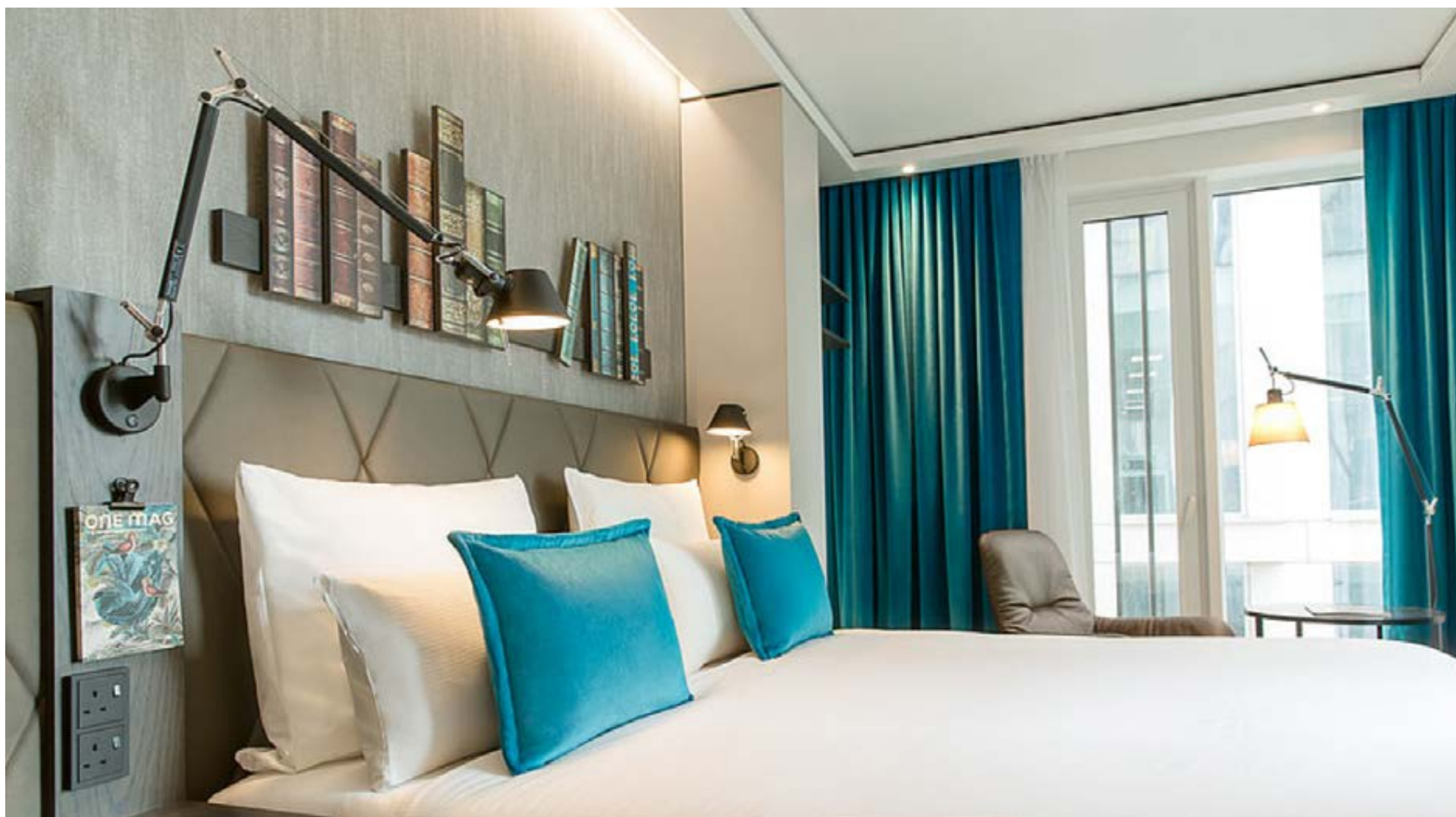
241 Apartments

Working directly here with Saco, we were approached to implement the creative direction directly from the client, and consider this a technical implementation project.

The process here involved detailed up front briefing, and then in depth adaptations and refinement to achieve a meticulously planned and realized set of apartment styles.

The style is clean lines with confident usage of block colour and blended woven details.





Motel One & Stay City Wilde, Manchester

Brand Guideline Rollout

Working alongside LRW Architects, we have completed a number of hotels across the Motel One portfolio.

The images shown however are from the recent Motel One & Stay City Wilde opening in St. Peters Sq. Manchester.

The majority of design work here was to implement brand standards, but it gives us a level of experience in the market we are discussing with you currently.





Food & Drink Experience

Warrington Market

Warrington Council

Working in partnership with LRW architects, we provided the design direction for the market development in Warrington.

Our scope for the project started with the initial concept exploration to design a consistent branding strategy for all stands and retailers, but also allow them to have their own unique attributes.

Following concept agreement, we worked hand in hand with LRW for the stage 3 & 4 packages.

We love how this has turned out, and definitely recommend a trip!





Build to Rent Experience

KONCEPT
INTERIOR DESIGN

Circle Square Apartments, Manchester

Vita Living

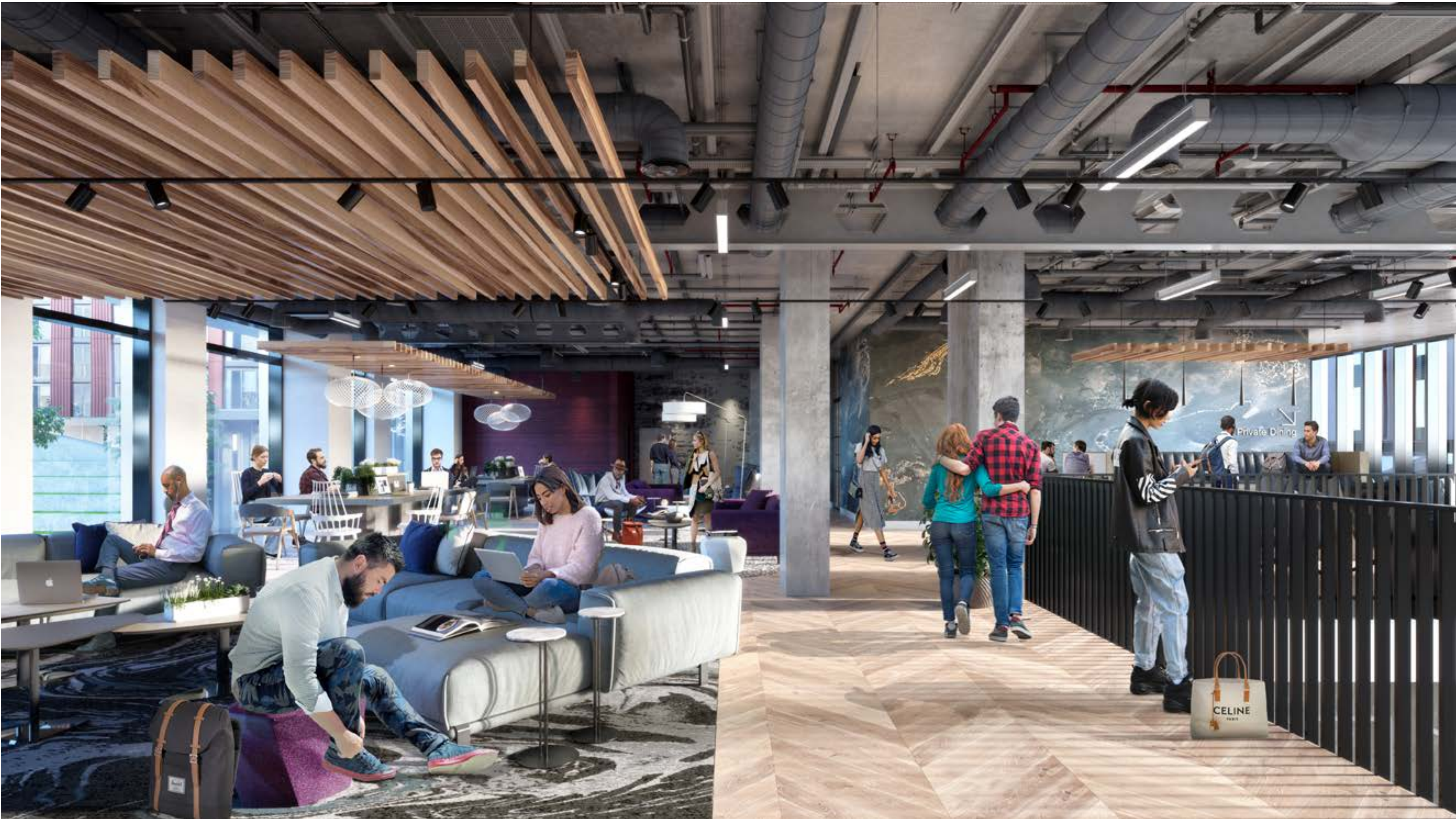
Build to Rent

Koncept were approached by Vita Living to design the amenity spaces across two properties within the Circle Square development for their luxury apartment scheme.

The amenity offering was a combination of open plan gathering areas with bars & kitchens, private dining rooms, meeting & work spaces, cinema rooms & wellbeing suites.

Due to the amount of spaces in total we wanted to design them with a consistency in mind and tied them together with an elemental concept.

The private dining rooms then have an individual theme to keep them interesting.



New Makers Yard, Salford

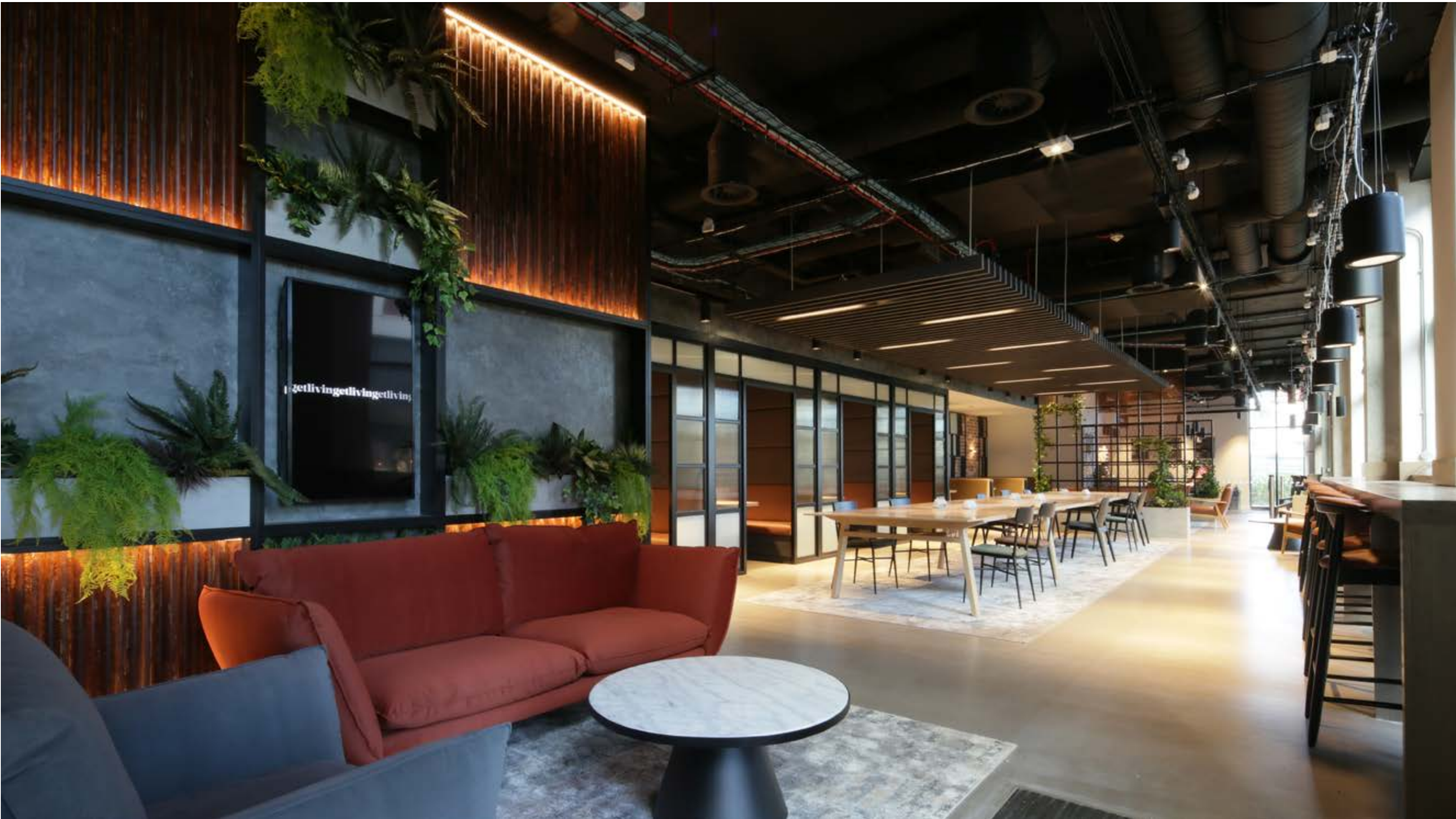
Get Living

Build to Rent

Koncept were appointed to assist across multiple public area spaces in the New Makers Yard development in Salford.

The images attached show the amenity lounge/co-working space with an independent coffee company. The theming for this space was the industrial backdrop and rustic materials in the surrounding area with the new rail connection from Victoria to Piccadilly.

Also in the scope of works, a refurbishment to the management/ lettings office with a sharper feel to differentiate the spaces.



The Arches, Leicester

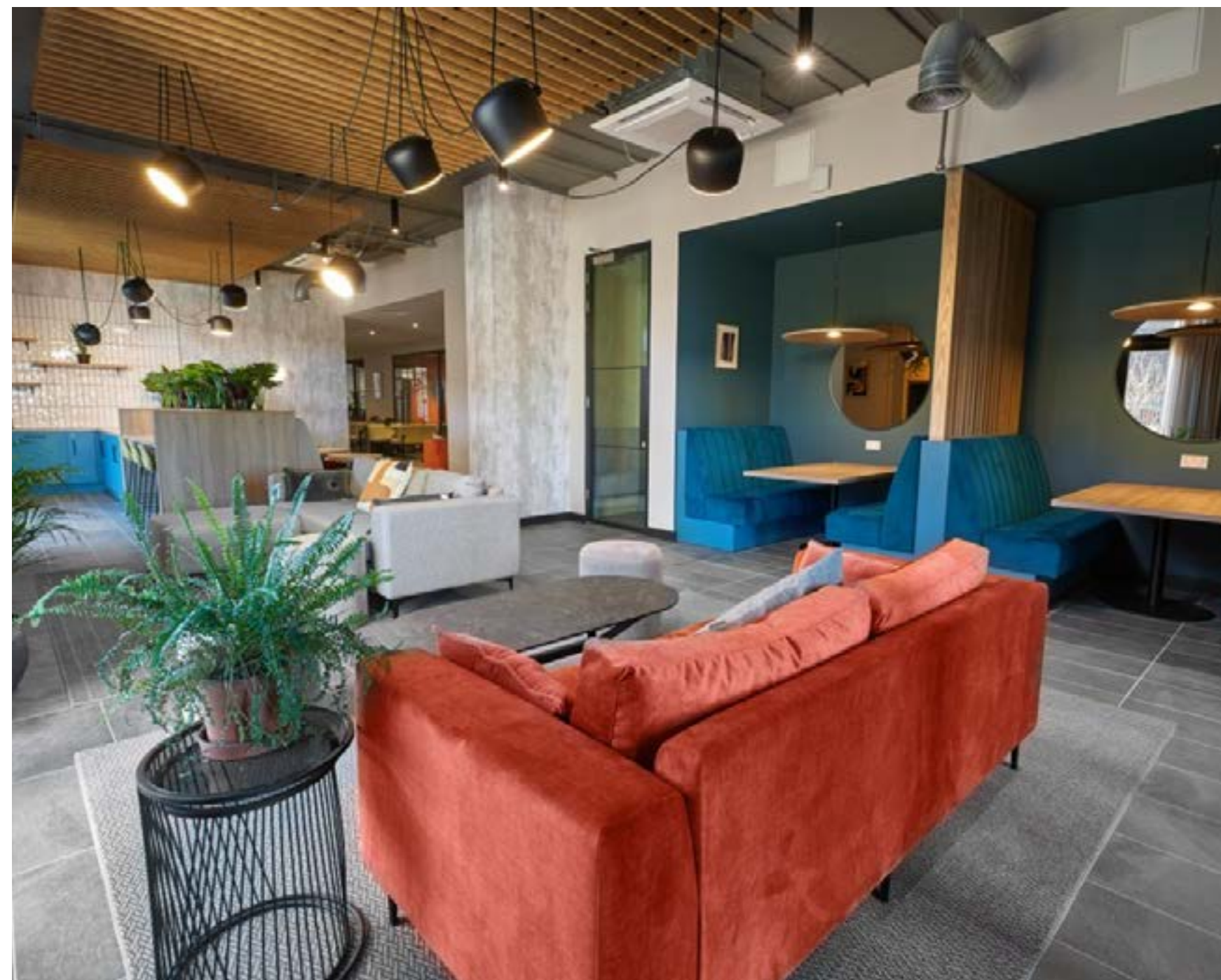
Cortland / Watkin Jones

Build to Rent

We were appointed directly by Watkin Jones to create a unique environment for the BTR development in the center of Leicester city centre.

Our scope of works included full design and detailing for the Reception, Amenity spaces including meeting provision and media room, gym and staff offices.

Alongside this we gave assistance into the creative branding for 'The Arches'.



The Forge, Newcastle

Moorfield

Build to Rent

Full design of the public areas for this purpose designed, 284 apartment scheme in the vibrant heart of Newcastle.

With our specialist hospitality experience through their hotels expertise, they make these PRS areas bespoke and unique in their quality of service and branding. Incorporating mood lighting to give residents a space they can use around the clock, for multiple purposes from lounging, studying to entertaining. The ground floor comprises of the reception lobby, communal lounge, meeting room, postal room and gym.





125

01 FAUCIBUS TINCIDUNT

06 LIGULA EGET

Friars Yard, London.

Maya Capital

Office

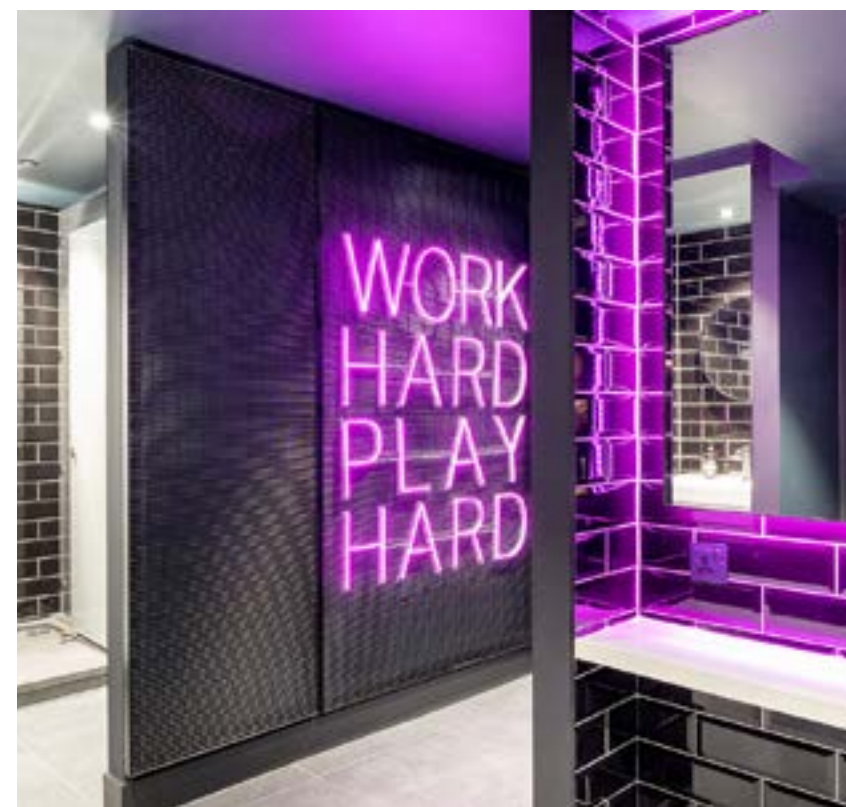
We were approached by Maya Capital to help rejuvenate the office block at 160 Blackfriars Road, London.

The client had been in conversation elsewhere initially and had a loose interiors scheme, but wasn't aligning with their aspirations for the space.

Our work here focused on a minimal, confident design with emphasis on the details.

We know that incoming tenants want to make their own mark on the space, so designing a considered foundation is key in opportunities like this.

Works involved full entrance lobby, circulation spaces, selected CAT A floors, showers, bike storage & roof terrace.



125 Deansgate, Manchester.

Worthingtons

Office

The client brief for 125 Deansgate was to create an environment that stands out from the rest of the market in the city.

The resulting design focused on quality of traditional materials and the connection with cutting edge fabrication and fixing methods.

The design principles set the day to day journey to the lifts as the principle direction, and pieces the rest of the puzzle around this to complete the design. Daylight was maximised through considered mirror placement.

Areas covered for the scope were the entrance lobby, circulation, lift lobbies & toilets to each floor.

Unfortunately during design development, the building was taken over in full by a co-working venture, so the project did not complete.



Codemasters, Leamington Spa.

Codemasters

Office

Initial pitch visuals for a dynamic scheme at the leading games design company.

The renovation works followed successful appointments around the formula one enterprised games, so the design focused on a celebration of their works in the motor sport categories.

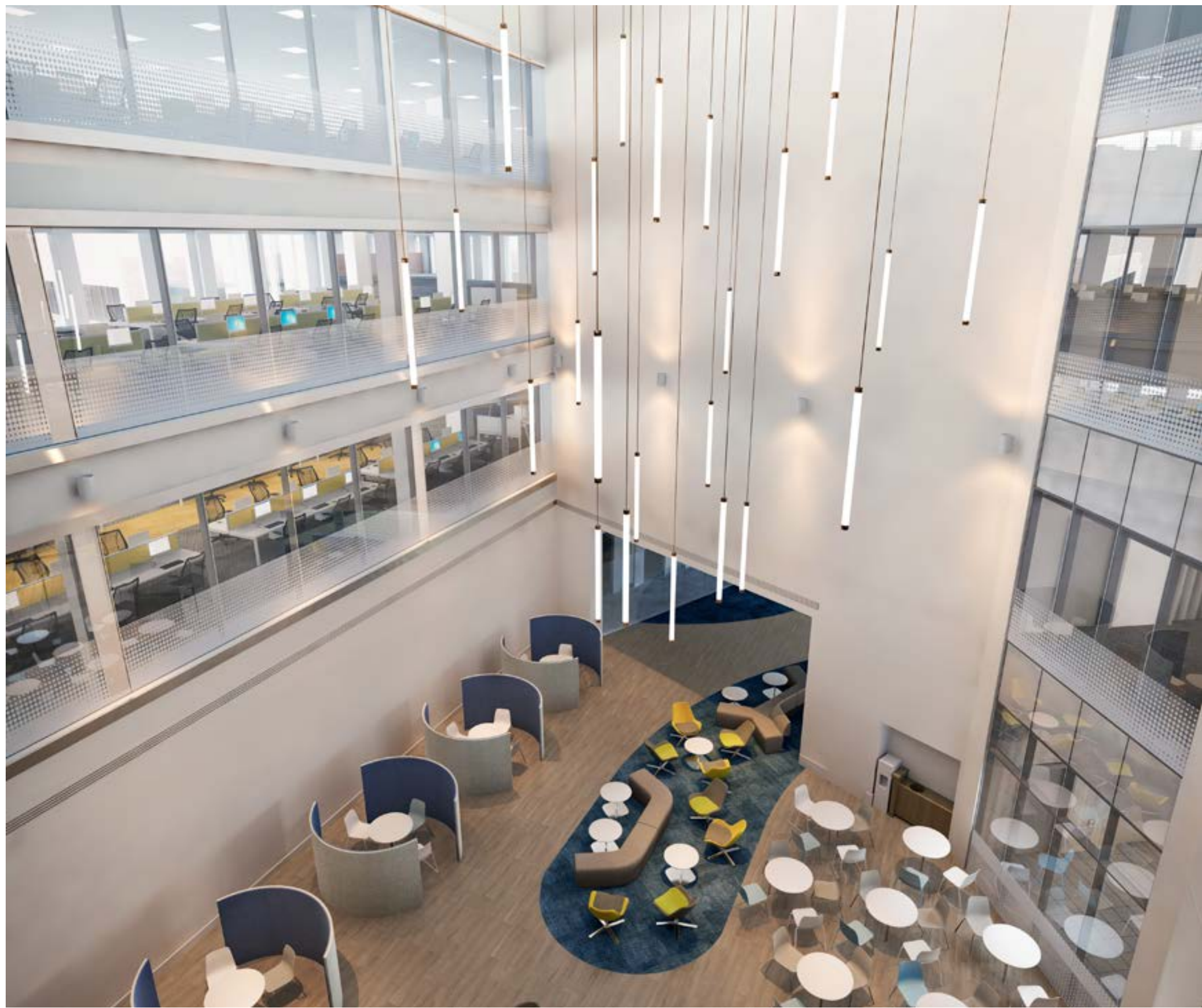


Council Offices, Warrington.

Muse

Office

Working in collaboration with Muse & Warrington Council, Koncept ID & LRW Architects designed a state of the art office block to combine the day to day council needs, and balance this with a community hub for all the general public needs.



In- House Visualisation

We have the benefit of being able to work directly with our sister company, Mesh Media for our visualisation work.

We find the ability to work directly, and in house enables us to make the process more efficient and this benefits the end product.

Mesh Media are a team of Artists & Designers specializing in 3D Visualisation, Graphic Design & Animation for the architecture & property industries.





Thank You.

Paul Scott:
Paul@konceptid.co.uk

Simon Scott:
Simon@konceptid.co.uk

KONCEPT
INTERIOR DESIGN