

KONCEPT HOTELS



NOVOTEL CANARY WHARF

Category : 4 Star Hotel

Client : Novotel

Location: Canary Wharf, London

Date : Complete 2017

The Project:

Leach Rhodes Walker Architects delivered the new UK Flagship Novotel for Accor Hotels at Canary Wharf. KONCEPT were awarded concept design and implementation of the first phase of the public areas to the value of circa £1.5m. Novotel Canary Wharf is a KONCEPT designed, stylish, 39 storey hotel which comprises a state of the art gym and pool, 9 fully equipped meeting rooms, a contemporary restaurant, bar and roof terrace with panoramic views across london.

The Design:

Novotel London Canary Wharf is a Hotel inspired by the industrial Maritime age and Canary Islands. Throughout the building there are references to the ports rich heritage. From the use of authentic materials, patterns and textures coupled with the bespoke contemporary furniture, a truly unique interior has been created which is true to its roots, delighting the senses and bringing the industrial past in to the present.



NOVOTEL BRENTFORD

Category : Hotel – New build
Client : Accor
Contract : D&B
Date : Complete 2013

The Project:

Working closely with the operator we have developed the new brand Novotel, embracing their new hospitality concept of 'living heart lobby', the spatial design was integral to ensure it flowed as one space, with multiuse pockets for dining, drinking, relaxing or working.

Cutting edge technology also offers the guest a new check-in experience; now wireless and not anchored to a reception desk, the interaction is done by tablet in any area.

The Design:

Rural in the city – links nature and 'tree of life' concepts offering guests an urban retreat, with the use of pattern, materials and fabrics, this has been fused with a minimal undertone of the building backdrop: seamless concrete floors and floor to ceiling windows offer daylight & spatial awareness.

*** finalist for northern design
awards 2014**



HAMPTON BY HILTON LIVERPOOL JOHN LENNON AIRPORT

Category : Hotel
Client : Peel
Contract : Design

Developer : Peel Developments
Operator : Accor uk ltd
Avg Net Area per Guestroom : 24 m²
Gross Area per Guestroom : 55.6 m²

The 160 guestroom hotel has been located at high level above the new multi-storey car park directly facing the terminal building.

A high level bridge links the hotel to the terminal. The location allows for great views over the runway and river beyond from all rooms in the hotel.



MERCURE VARIOUS UK

Category : Mid-Range Hotel's
Client : Accor
Contract : Traditional
Date : Ongoing

The Project:

Working closely with Accor to refurbish a number of Mercure Hotels all across the UK including Mercure Oxford, Mercure Bristol and most recently Mercure Haydock to name a few. We have taken dated public areas and bedrooms and made them into inviting, sophisticated spaces for guests to enjoy.

The Design:

The ethos of Mercure Hotels is based on local inspirations, we capture these themes to produce modern and stylish interiors where every hotel becomes unique.



HILTON TRAFFORD

Category : 4 Star Hotel
Client : Peel
Contract : Design

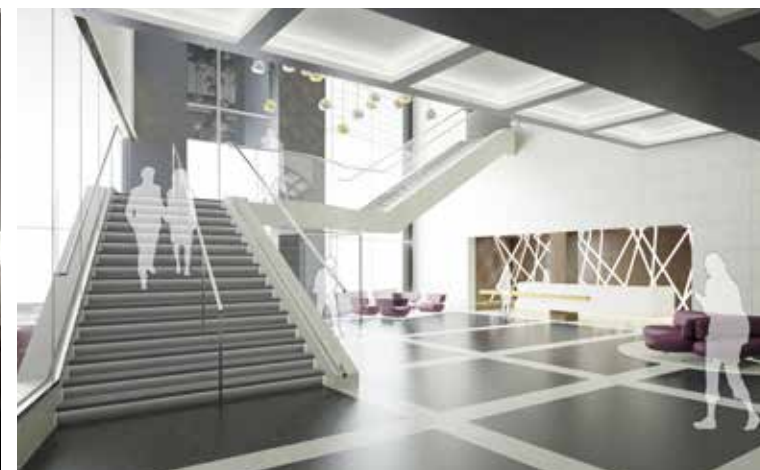
The Project:

KONCEPT are appointed to design a luxury interior design proposal for a new core brand Hilton hotel adjacent to the intu Trafford Centre in Manchester. The appointment includes the design of all internal spaces including bedrooms, public areas and the spa facilities.

The Design:

Having considered several design ideas, the scheme was developed with a luxury fashion concept at its centre. This focused on the use of luxury tactile materials alongside cool colours and clean lined spaces.

The scheme is developed to tender stage and is currently awaiting instruction to progress to detailed design.



CROWNE PLAZA'S MANCHESTER

MANCHESTER BUSINESS SCHOOL
(Manchester University)
Developer : Bruntwood
Operator : IHG - Staybridge Apartments
& Crowne Plaza
Avg Net Area per Guestroom :
Crowne Plaza 25.2 m²
Staybridge Apartments 34 m²
Gross Area per Guestroom : 55 m²

The Crowne Plaza provides 210 bedrooms whilst the Staybridge apartments provides 116 suites with fantastic views across the city.



SHUDEHILL, MANCHESTER
Category : Hotel
Client : Iclian Developments
Value : £1m Public Areas
Contract : Design & Build
Date : 2008

The wedge-shaped site dictated that much of the architectural language was angular and asymmetrical. This complimented the desire to reflect the dynamic attitude and cutting edge culture of this neighbourhood. The design intent is to:

- Be a hotel of its time and of its place
- Make reference to the cultural and industrial heritage of the city through materials and imagery
- Use bold, monolithic forms and dynamic angles to create exciting spaces
- Exercise restraint in the bedroom areas to allow the coloured glass facade to feature prominently.



MALMAISON MANCHESTER & LIVERPOOL

MANCHESTER

Category : Luxury Hotel

Contract : Traditional / D&B

Date : 1997/2002

The Grade II listed Joshua Hoyle Building was built by architect Charles Heathcote in 1906 as a textile warehouse. It is of considerable historical interest as an early example of steel-frame construction. LRW were first appointed in 1997 as architects working in collaboration with Amanda Rosa on the first contemporary extension which allowed the previously disused building to become a destination boutique hotel. Another appointment followed in 2002 for joint architecture and interior design for the second sensitive extension of the building and the refurbishment of the reception, bar and bedrooms of the existing hotel. Originally 120 bedrooms, the extensions added 65 rooms over 5 levels.

LIVERPOOL

Category : Luxury Hotel

Contract : Design & Build

Date : December 2006

Liverpool was Malmaison's first purpose built hotel and is situated on the regenerated Princess Dock close to the iconic Liver Building. It provides 150 bedrooms, a double height reception space, bar, brasserie, and meeting rooms in a classic Malmaison style. The hotel opened at the end of 2006 and was subsequently nominated for – Best Architecture (Newbuild) and Best Interior Design (Suite)- at the Sleep European Hotel Design Awards 2007.



MALMAISON MANCHESTER



MALMAISON LIVERPOOL

PULLMAN HOTEL LONDON

Category : Luxury 5 Star Hotel
Client : Accor
Value : £12 m refurbishment
Contract : traditional
Date : 2010-2013

The Project:

A vibrant refurbishment to transform all the public areas, bedrooms & bathrooms.

The Design:

The public areas are inspired by british tailoring, we implemented a design concept developed by proof, of stripes, herringbone & bowler hats which reinforced the compliment the London look.

The bedrooms are modern & spacious, with a large crisp white bedding with plush accessories, the bathroom focuses on an walk-in rain shower experience.



LEOPOLD HOTELS VARIOUS LOCATIONS

Category : Boutique Hotel
Client : Prem Group
Value : Circa £5 M
Contract : Traditional
Date : 2006 - Present

The Project:

LRW have developed a close relationship with Prem group working on a wide variety of hotel refurbishments, the first being Leopold Sheffield, a former grade II listed boys school which we sensitively restored into the only 4 star boutique hotel in Sheffield, offering 90 uniquely styled bedrooms. The hotel is now part of the 'small luxury hotels of the world' consortium.

The Design:

We took great care to retain as many of the buildings original features as possible, also adding quirky links back to the boys school. Since developing the boutique brand for Prem hotels we have gone on to design further hotel concepts throughout Belgium such as Liege, Antwerp and Oudenaarde.



IBIS HOTELS VARIOUS UK

Category : Hotel
Client : Accor
Value : £100-£800 K
Contract : traditional
Date : ongoing

We have worked closely with the client to stay ahead of the competition by developing a budget brand which is stylish & funky. Key brand identifiers such as feature ceilings, digital artwork and overscaled designer pieces of furniture & lighting are repeated through the schemes which give the public areas a current twist.

Hints of locality are introduced in the artwork, be it the train track design at ibis Euston or the cobbled street & graffiti at ibis City linking it to the famous Brick Lane, these subtle hints give the interiors an urban edge. We have developed multifunctional spaces: Reception & bar combined gives good use of small public area space, plus staff can service both areas. Breakfast servery becomes high poseur tables for cocktails, the evening bar becomes a coffee shop throughout the day. Connectivity areas are easily identifiable by the suggestion of a modern library – white books.



SEAHAM HALL NORTHUMBERLAND

Category : Hotel Refurbishment

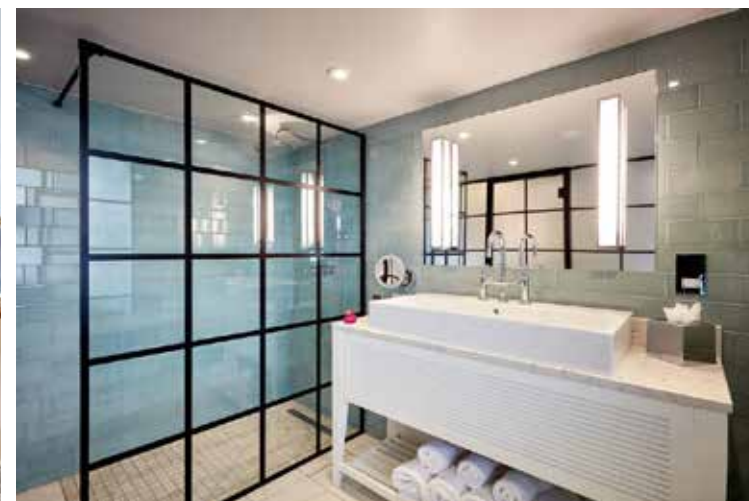
Client : Seaham Hall

Contract : Traditional

Date : On-Site

In the newly refurbished suite 5 we wanted to really enhance the sea view and maximise the natural coastal light through the beautiful Georgian windows. The suite's fresh and bright interior takes its inspiration from artists that have long been drawn to the drama and energy of the sea and the tactility of the coastline. Flying seagull wallpaper, cracked paint effects and weathered timber is lifted with smatterings of vibrant colour. Cushions feature reproduction paintings by renowned artist Jessica Zoob, a oversized mirror is displayed on a paint-splattered easel and the headboard resembles a painter's palette, daubed with multicoloured paint.

The next phase of room refurbishments will make a slightly bolder statement. The first Garden Room will be light, and vibrant with colourful butterflies, birds and plant life providing the back drop to a luxurious lounge, elevated bedroom and private terrace complete with hot tub. Meanwhile, the first Suite will reflect the flamboyant and romantic personality of Lord Byron featuring lots of colourful artworks, poetry and more references to nature and the sea.



MIDLAND HOTEL MANCHESTER

Category : Luxury 4 Star Hotel
Client : Q Hotels
Value : £15 m
Contract : Traditional
Date : 2005

The Project:

One of the most prestigious buildings in Manchester was brought back to its former glory with a lavish £15 million, top to toe refurbishment, the grand hotel is steeped in history and has played host to Kings, Queens, Presidents, Prime Ministers and rock stars, not to mention where Mr Rolls met Mr Royce.

The Design:

335 sumptuous bedrooms provide an opulent retreat, the impressive yet inviting public areas offer an inspiring and sophisticated environment to relax in, whilst the grand conference and banqueting facilities are supported by two fabulous restaurants including 'the French'.



HOTEL FUTURE OLDHAM

Client: Oldham Metropolitan Borough
Council
Status: In Design

The Project:
Hotel Future seeks to deliver a high-quality
hotel and conferencing venue in the heart of
the town centre.



PRINCIPAL BEAUMONT ESTATE WINDSOR

Category : Luxury 4 Star Hotel

Client : Principal Hayley

Date : 2016

The Project:

Concept design for implementation of an elegant new bar and restaurant within a listed building.



MALMAISON LEEDS

Category : 4 Star Hotel
Client : Malmaison
Location: Leeds
Date : Complete 2017

The Project:

Offering flexibility, personality and style, Work + Play puts the needs of today's dynamic new entrepreneurs, businesses and start-ups at its heart. Gone are the greys of traditional corporate hospitality, replaced with edgy artwork, sleek glass walls which give the space a brightness and an openness and breakout spaces which create an inspiring spot for collaboration and idea creation.

The Design:

Malmaison Leeds is the fourth Malmaison to open a Work + Play outlet, following in the footsteps of Malmaison Manchester, Malmaison Birmingham and Malmaison Brighton.

Work + Play at Malmaison Leeds comprises four air-conditioned meeting rooms and two soundproof glass pods that can each be used individually or merged for larger events.

Every room is equipped with the latest technology with a built-in media centre and wireless TV screen – making it simple for users to plug in and play.



HAMPTON BY HILTON STANSTED

Category : Hotel - New Build
Client : Terrace Hill
Date : Complete 2017

The hotel is located in close proximity to the terminal adjacent to enterprise House on Bassingbourn Road. The Hotel has 350 rooms and accommodation for an independent restaurant facility facing the main pedestrian route to the terminal building.

As a Hampton by Hilton hotel there is the standard facilities with an 'open layout' design for the public areas together with the associated meeting rooms, gymnasium accessed at ground level.



NOVOTEL BATH ROAD HEATHROW

Category : Hotel
Client : Accor
Date : 2017-2018

The Project:

Novotel Hotel, Bath Road, Heathrow is a 168 bedroom hotel conversion from the old CAA offices adjacent to the main terminal buildings.

The hotel sports a fourth floor enclosed terrace bar overlooking the main runway. It also houses unique 'Sky Pods' raised feature lounge structures located in the central atrium.

This hotel is due to open in January 2018 and will be another Novotel flag-ship hotel for the Accor Brand.



SOUTH PLACE LONDON

Category : Luxury Boutique Hotel

Client : Frogmore / D&D London

Value : £22M

Contract : DESIGN & BUILD

Date : 2012

South Place is a brand new, 80-bedroom, luxury hotel in the City of London, just minutes away from Moorgate and Liverpool Street stations. The first hotel from restaurateurs D&D London, was intended to have a sense of energy and connection to local London neighbourhoods, including Silicon Roundabout at Old Street; the creative communities of Spitalfields, Shoreditch and Hoxton; as well as to business travellers in the Square Mile. The scheme is designed to achieve a BREEAM rating of Excellent and provide CO2 savings of 40% below Part L 2006 requirements. The green agenda is being taken seriously - both in the selection of materials as well as the management strategy.

This is a hotel for a new generation of business people: well travelled, media-savvy, free from the restrictions of 9-5 or the traditional separation of business and leisure. Spilling out into the hotel lobby is an 80-cover all-day brasserie along with a lively Library bar area creating a welcoming communal area at ground floor level. The first floor offers events spaces and private dining rooms, a games room, a gym with wellness area and a seven-storey, open air light well lounge. Atop the hotel rooms a destination restaurant with bar and terrace promise to be one of the places to do business or unwind after a busy day. Louise James worked on the scheme whilst at Conran & Partners. Her responsibilities included:

- Liaison with client.
- Concept design of public areas as part of a team.
- Space planning of key areas.
- Production of concept design document.
- Production of detail design manual.
- Coordination with other appointed consultants
- Including architect, M&E, sustainability



THE MAJESTIC HARROGATE

Category : Hotel
Client : The Cairn Group
Date : 2018

The Project:

The Majestic is one of the most prestigious hotels in the beautiful spa town of Harrogate.

Built in 1899, the hotel is steeped with history and this is particularly reflected in the opulent materials that adorn its public areas.



HUNTON PARK HOTEL HERTFORDSHIRE

Status: in Design



HOTEL

Status: in Design

